

# MONTHLY MEMBERSHIP PROGRESS REPORT

District 325 S

Results as of: 5/31/2026

GMT:

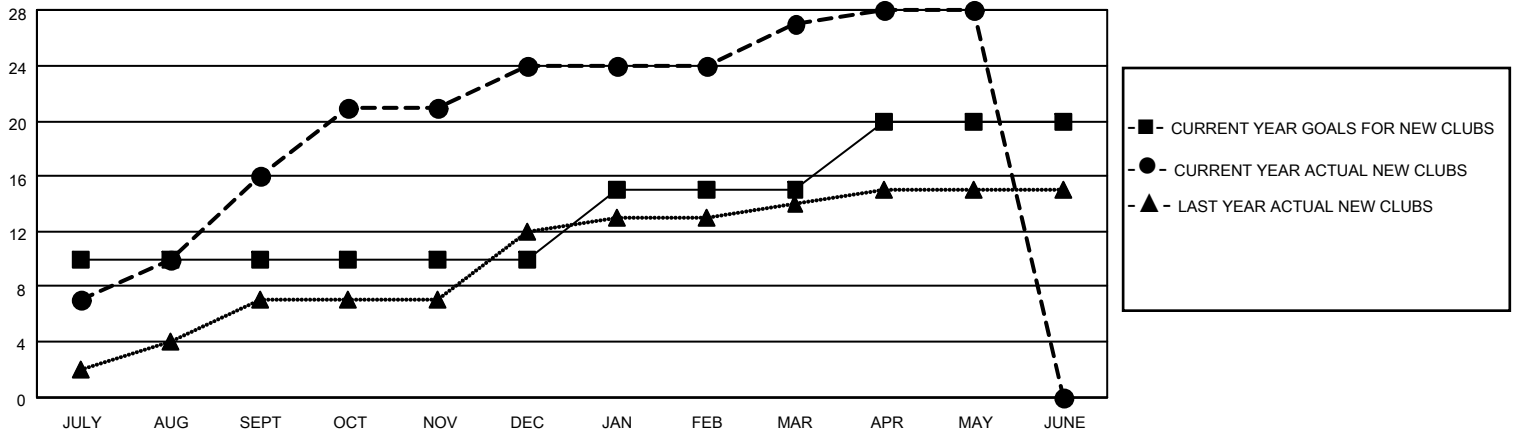
LOCATION NEPAL

GMT CA

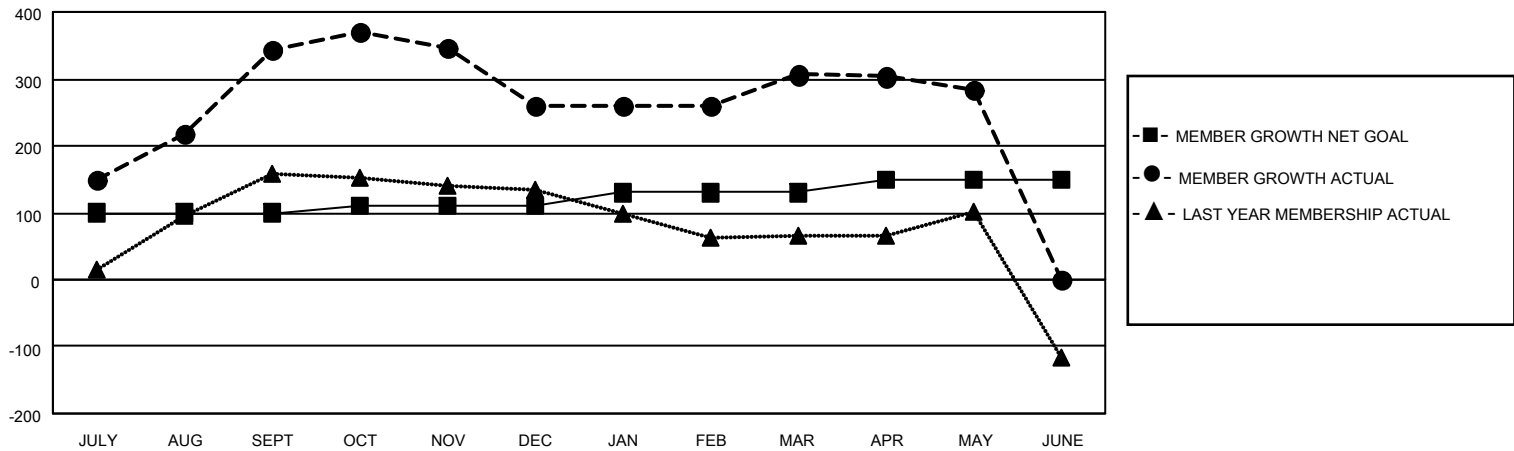
Clubs			
RESULTS FOR 2025-2026			
QUARTER	NEW CLUB GOAL	NEW CLUBS	DROPPED CLUBS
JULY/AUG/SEPT	10	16	1
OCT/NOV/DEC	0	8	0
JAN/FEB/MAR	5	3	0
APR/MAY/JUNE	5	1	1

Members			
RESULTS FOR 2025-2026			
QUARTER	MEMBER GROWTH NET GOAL	MEMBER GROWTH ACTUAL	DROPPED MEMBERS ACTUAL (including transfers)
JULY/AUG/SEPT	100	453	99
OCT/NOV/DEC	10	244	312
JAN/FEB/MAR	20	82	27
APR/MAY/JUNE	20	30	49

GOALS AND ACTUAL NEW CLUBS CUMULATIVE



GOALS AND ACTUAL MEMBERS CUMULATIVE



<b>DROPPED CLUBS: 2</b>	88 CLUBS OF 158 ADDED 1 OR MORE NEW MEMBERS	<b>GENDER DISTRIBUTION</b>	
		MALE 1,379 (65.29%)	FEMALE 732 (34.66%)
<b>DROPPED MEMBERS</b>		<a href="#">CLICK HERE FOR CUMULATIVE MEMBERSHIP DATA</a>	TOTAL FAMILY UNIT MEMBERS 1,466
DECEASED 1	CLUB CANCELLED 16		FAMILY MEMBERS PAYING HALF DUES 928
OTHER 469	TOTAL 486		